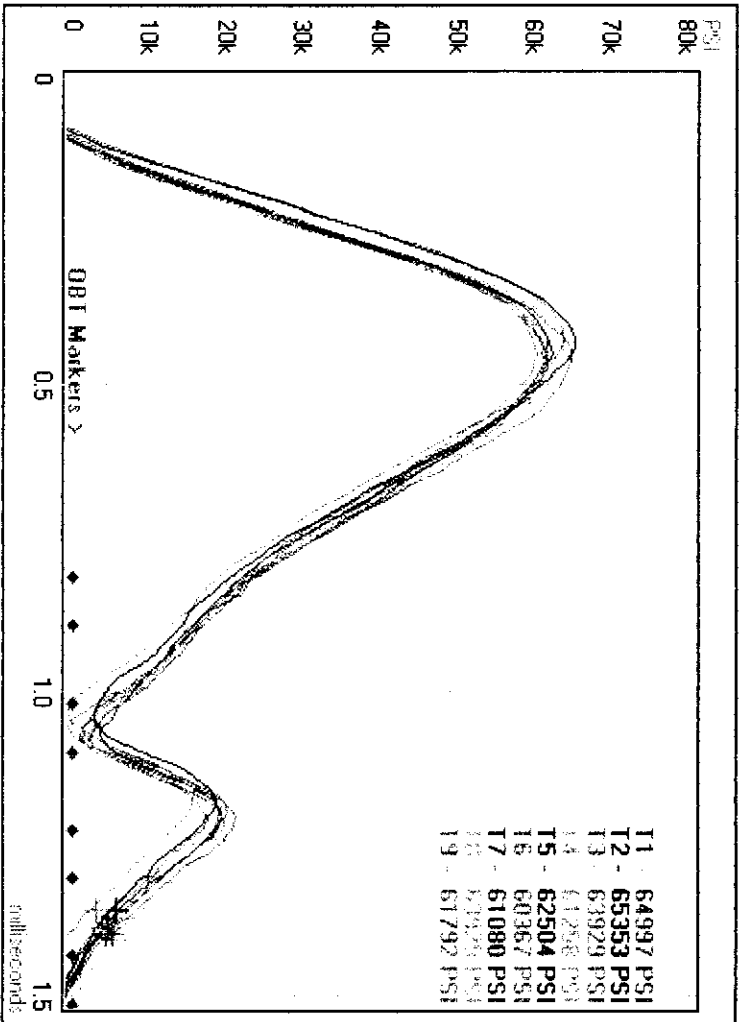


PressureTrace Report
for
458 Win 500 grain Barnes XXX

1/15/08 9:20:01 AM
C:\Program Files\Southwest Products\PressureTrace\Traces\#1.plc

Temperature : 59 °F Pressure : 29.53 in Hg Humidity : 78 %



Trace	FPS	PSI	**Area	Rise	*EFT%	Ave	SD	95% Prob	HI	Low	ES	FPS	PSI	**Area	Rise
T1	2179	64997	3724K	130	97.61	2173	62801	3564K	130						
T2	2185	65353	3621K	140	94.65	8	1811	89K	5						
T3	2157	63929	3439K	130	90.73	6	1477	72K	4						
T4	2172	61258	3607K	120	100.00	2185	65353	3724K	140						
T5	2174	62504	3552K	130	96.60	2157	60367	3439K	120						
T6	2180	60367	3489K	130	98.52	28	4986	284K	20						
T7	2172	61080	3527K	130	98.06										
T8	2165	63929	3628K	130	96.07										
T9	2177	61792	3483K	130	95.95										

** Area is a indication of total energy delivered.
* Primarily for comparing loads with varying powder charge.
See the documentation for more information.