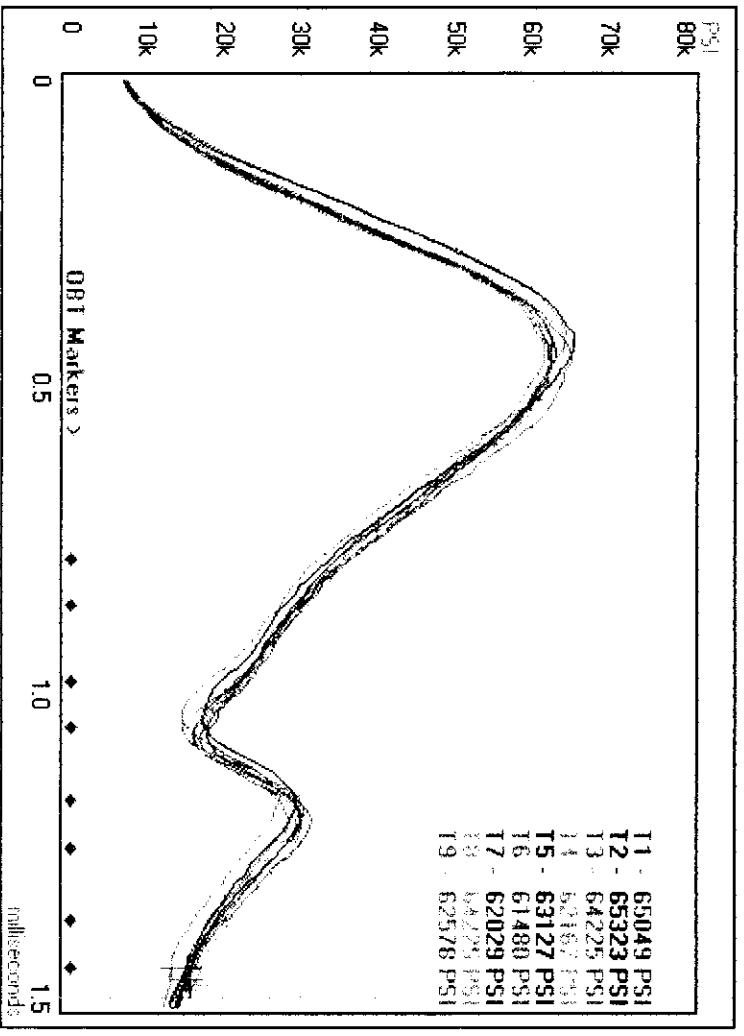


Pressure Trace Report
for
458 Win 500 grain Barnes XXX

1/14/08 8:14:04 AM
C:\Program Files\Southwest Products\PressureTrace\Traces#\1.ptc

Temperature : 59 °F Pressure : 29.53 in Hg Humidity : 78 %



Trace	FPS	PSI	**Area	Rise	*ET%	Ave	SD	FPS	PSI	**Area	Rise
T1	2175	65049	5098K	180	97.54	2174	63356	2174	63356	4952K	178
T2	2192	65323	4978K	170	95.60	10	1396	10	1396	82K	3
T3	2155	64225	4816K	180	92.47	8	1138	8	1138	67K	2
T4	2169	62167	5009K	180	100.00	2192	65323	2192	65323	5098K	180
T5	2178	63127	4949K	180	97.71	2155	61480	2155	61480	4816K	170
T6	2181	61480	4897K	180	99.41	ES	37	37	3842	282K	10
T7	2174	62029	4927K	180	98.83						
T8	2169	64225	5008K	180	96.79						
T9	2175	62578	4890K	180	97.26						

** Area is a indication of total energy delivered.
* Primarily for comparing loads with varying powder charge.
See the documentation for more information.